



www.guildford.gov.uk

Tom Horwood
Joint Chief Executive of Guildford and
Waverley Borough Councils

Dear Councillor

PLANNING COMMITTEE - WEDNESDAY 3 JANUARY 2024

Please find attached the following:

Agenda No	Item
------------------	-------------

- | | |
|----|--|
| 9. | <u>Presentations</u> (Pages 1 - 56) |
|----|--|

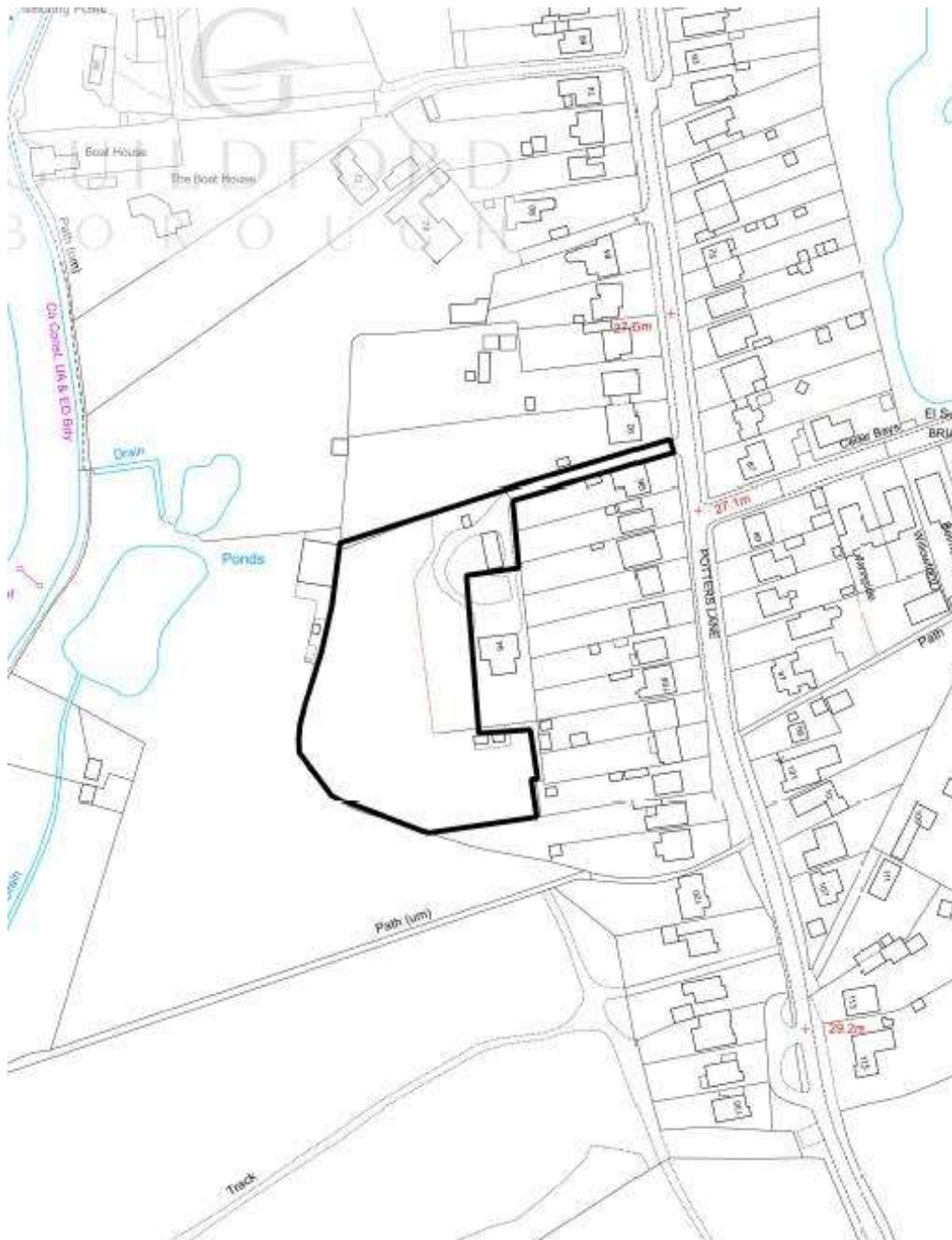
Yours sincerely

Sophie Butcher, Democratic Services Officer

Encs

This page is intentionally left blank

22/P/01966
94 Potters Lane
Send
Woking
GU23 7AL



Previous

Next

Home



Proposed layout

[Previous](#)

[Next](#)

[Home](#)

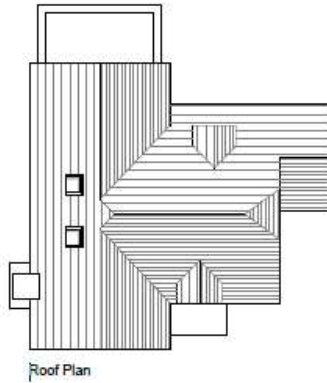


Artist impression of proposed development

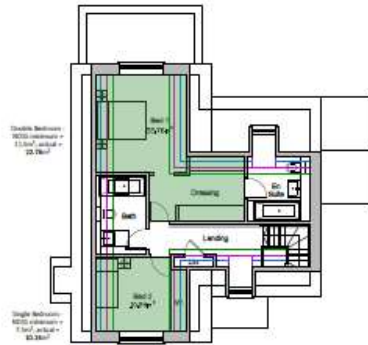
[Previous](#)

[Next](#)

[Home](#)



Roof Plan



First Floor Plan



Ground Floor Plan



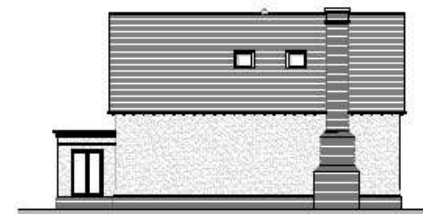
Front Elevation



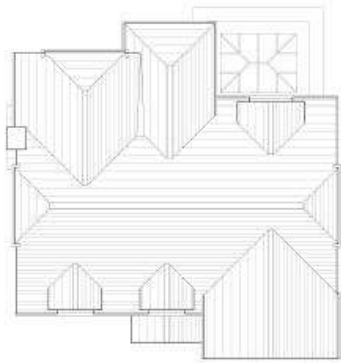
Side Elevation



Rear Elevation



Side Elevation



Roof Plan



First Floor Plan



Ground Floor Plan



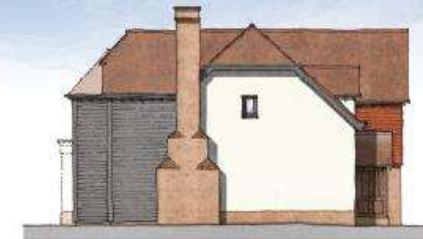
Front Elevation



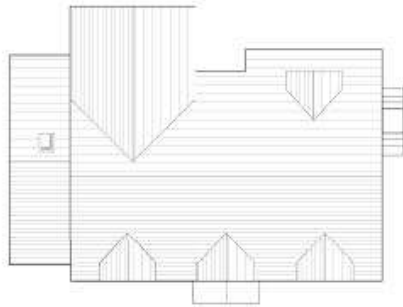
Side Elevation



Rear Elevation



Side Elevation



Roof Plan



First Floor Plan



Ground Floor Plan



Front Elevation



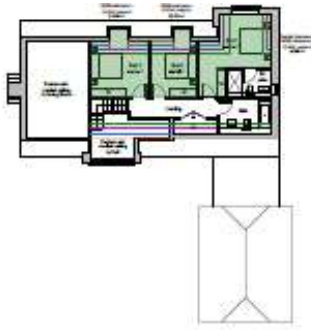
Side Elevation



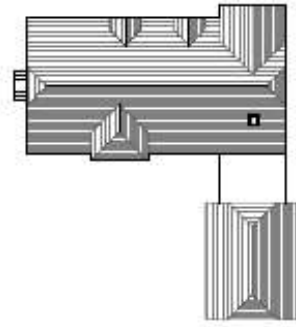
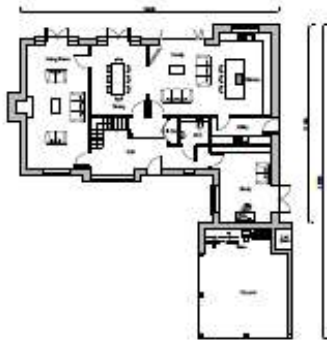
Rear Elevation



Side Elevation



First Floor Plan



Roof Plan



Front Elevation



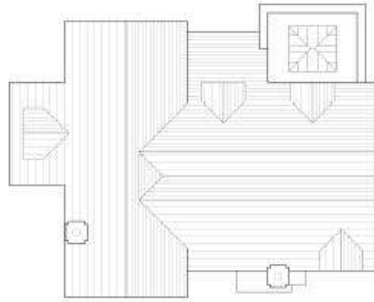
Side Elevation



Rear Elevation



Side Elevation



Roof Plan



First Floor Plan



Ground Floor Plan



Front Elevation



Side Elevation



Rear Elevation



Side Elevation





Views within the site

[Previous](#)

[Next](#)

[Home](#)



Views from Conservation Area and footpath

[Previous](#)

[Next](#)

[Home](#)



Views from Conservation Area and footpath

[Previous](#)

[Next](#)

[Home](#)



Plan showing Green Belt Conservation Area and footpath 55

[Previous](#)

[Next](#)

[Home](#)



Proposed verified views from the Conservation Area

[Previous](#)

[Next](#)

[Home](#)



Previous refused and dismissed scheme – 29 units

[Previous](#)

[Next](#)

[Home](#)





Proposed layout

[Previous](#)

[Next](#)

[Home](#)

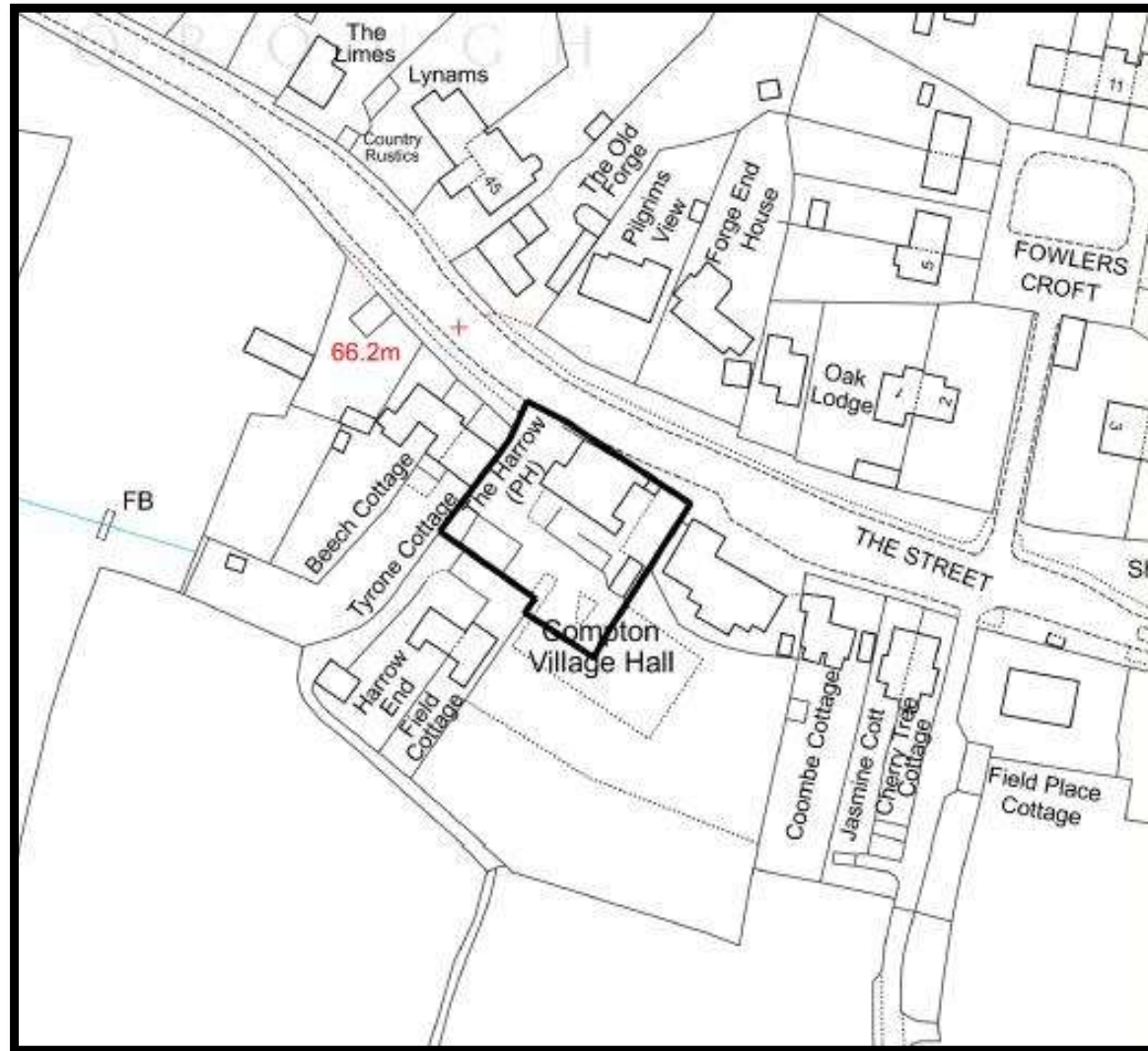
22/P/01999

**The Harrow Inn
The Street
Compton
Guildford**

[Previous](#)

[Next](#)

[Home](#)







1 Front Elevation
South-East
Scale 1:250



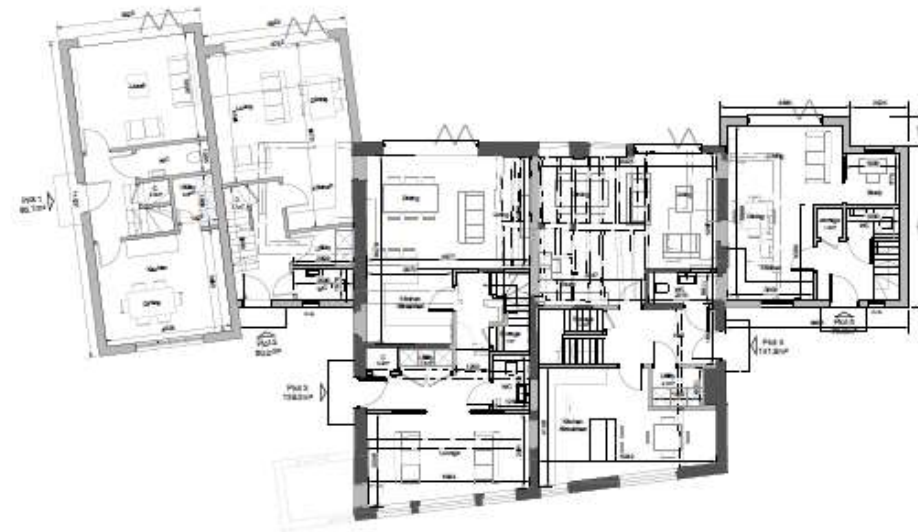
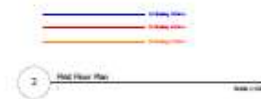
2 Side Elevation
North-East
Scale 1:250



3 Rear Elevation
North-West
Scale 1:250



4 Side Elevation
South-East
Scale 1:250







View along Road looking eastwards

[Previous](#)

[Next](#)

[Home](#)



View along Road looking westwards

[Previous](#)

[Next](#)

[Home](#)



View of rear of the building

[Previous](#)

[Next](#)

[Home](#)



Block Plan

Previous

Next

Home

This page is intentionally left blank

23/P/00592

**Westthorpe
Holford Road
Guildford**

[**Previous**](#)

[**Next**](#)

[**Home**](#)



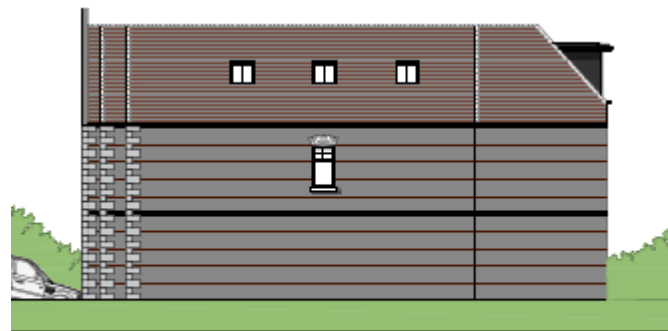
FRONT ELEVATION
SCALE: 1:100



REAR ELEVATION
SCALE: 1:100



SIDE ELEVATION (NORTH)
SCALE: 1:100



SIDE ELEVATION (SOUTH)
SCALE: 1:100



Site section

[Previous](#)

[Next](#)

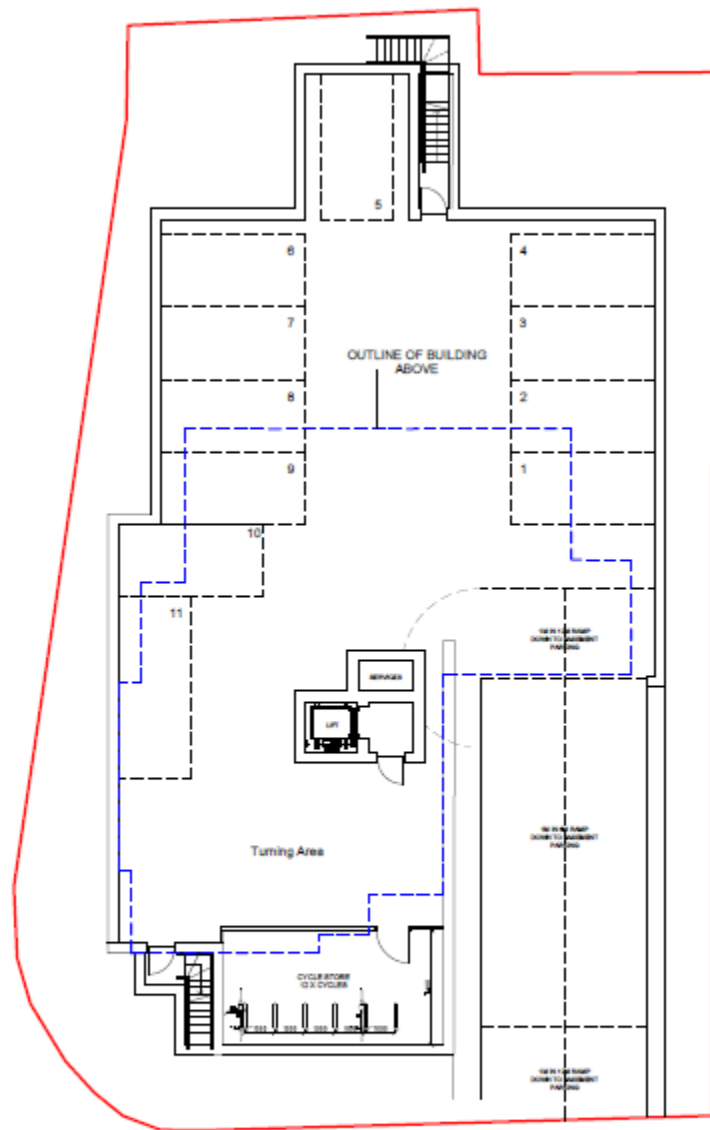
[Home](#)



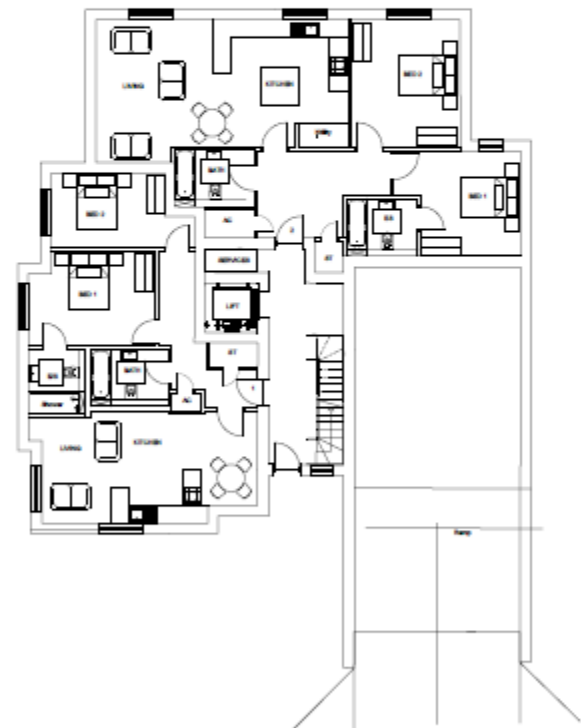
HOLFORD ROAD STREET SCENE (FOR INDICATIVE PURPOSES ONLY)
SCALE: 1:100



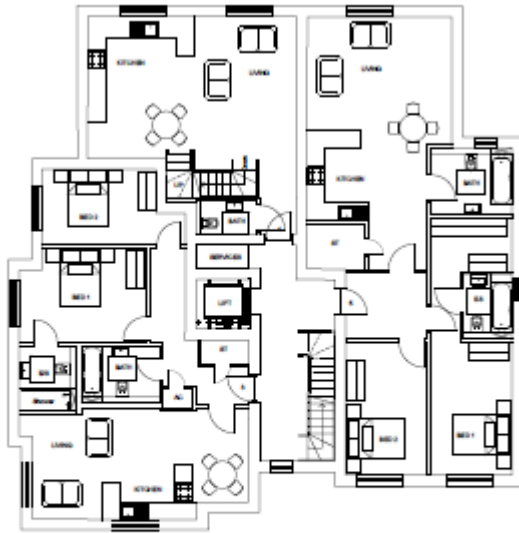
EPSOM ROAD STREET SCENE (FOR INDICATIVE PURPOSES ONLY)
SCALE: 1:100



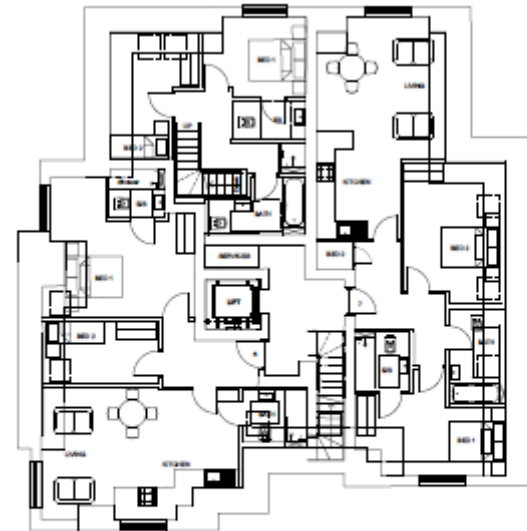
BASEMENT PARKING PLAN
SCALE: 1:100



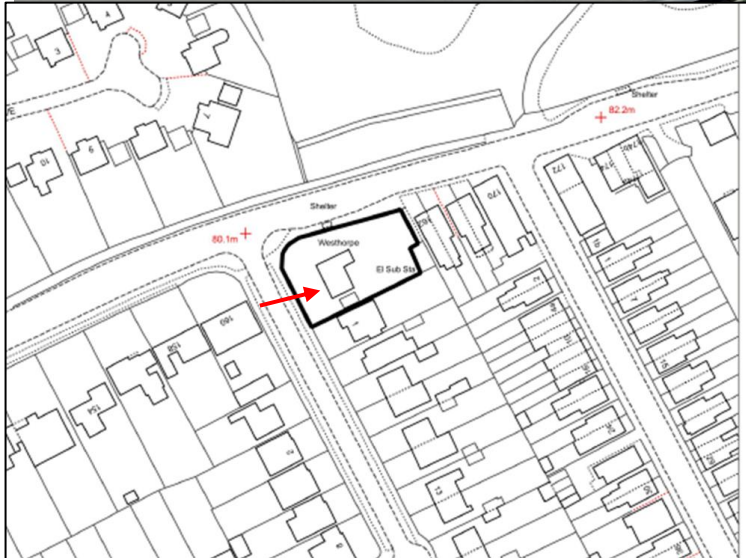
GROUND FLOOR PLAN
SCALE: 1:100

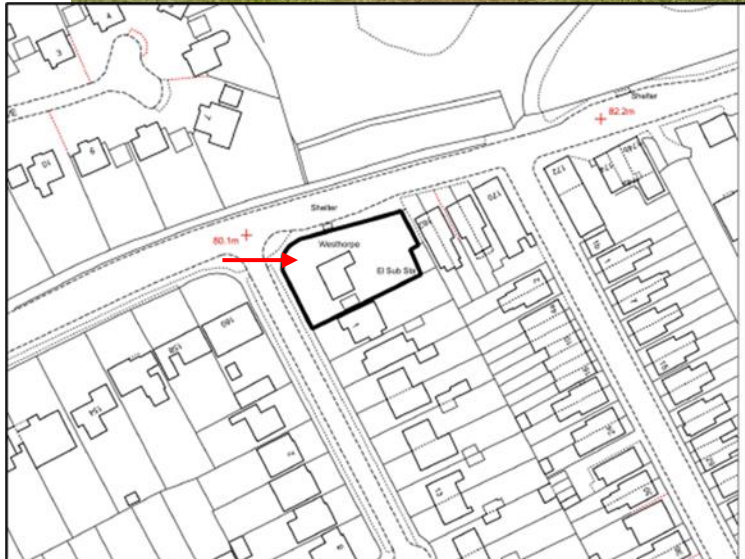


FIRST FLOOR
SCALE: 1:100



SECOND FLOOR
SCALE: 1:100

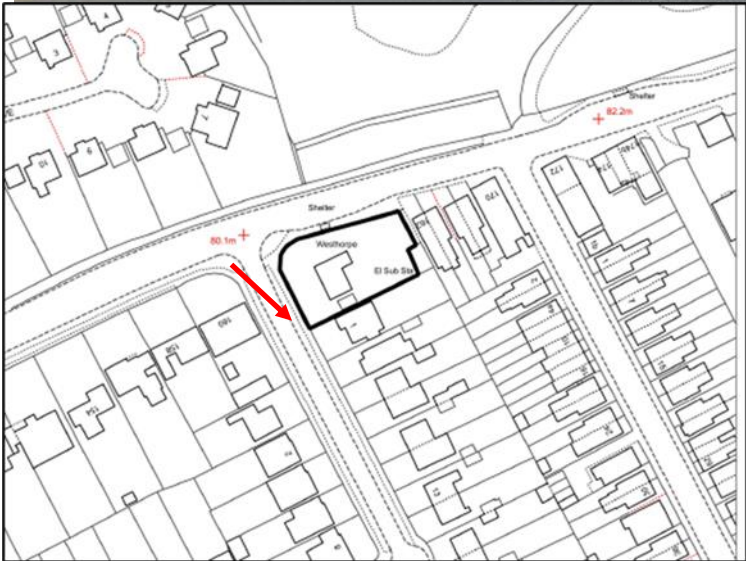
[Previous](#)[Next](#)[Home](#)



[Previous](#)

[Next](#)

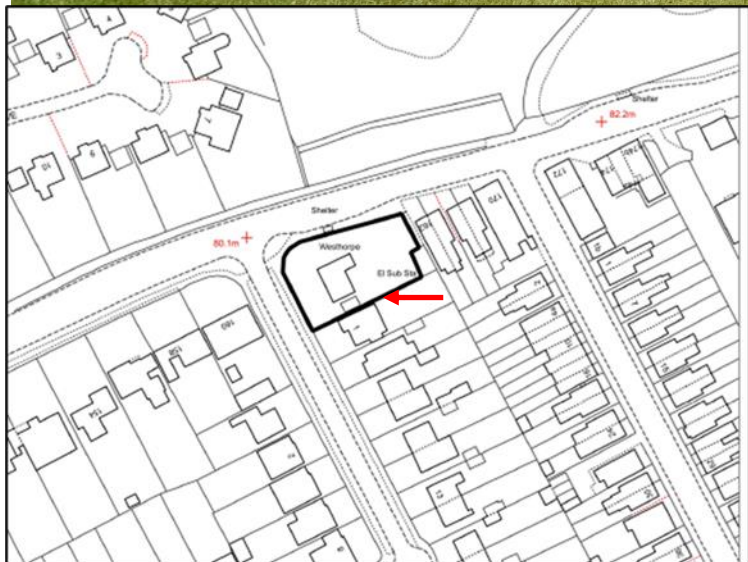
[Home](#)

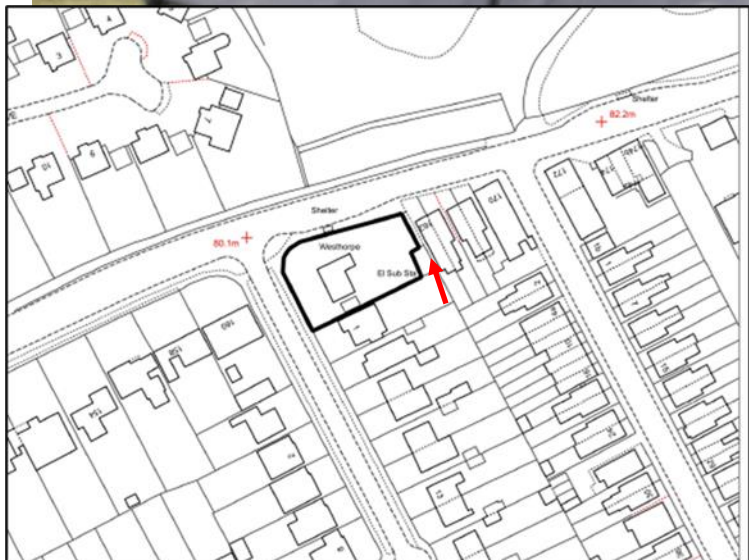


[Previous](#)

[Next](#)

[Home](#)

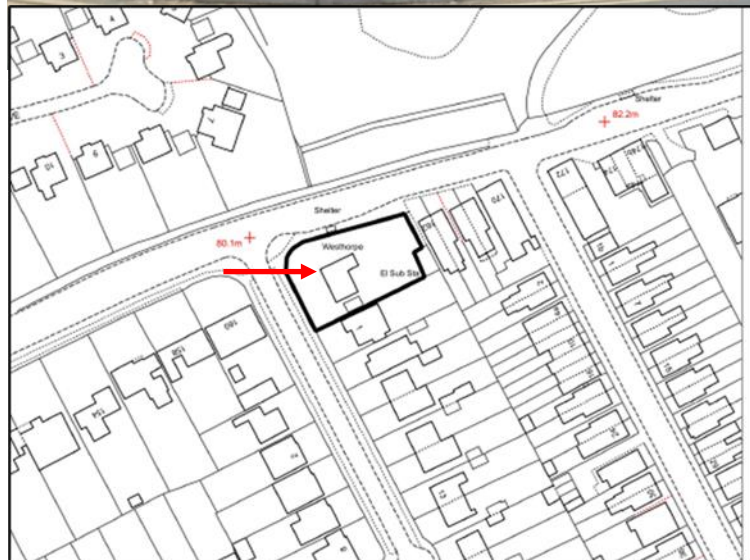
[Previous](#)[Next](#)[Home](#)



[Previous](#)

[Next](#)

[Home](#)

[Previous](#)[Next](#)[Home](#)

[Previous](#)

[Next](#)

[Home](#)

[Previous](#)

[Next](#)

[Home](#)

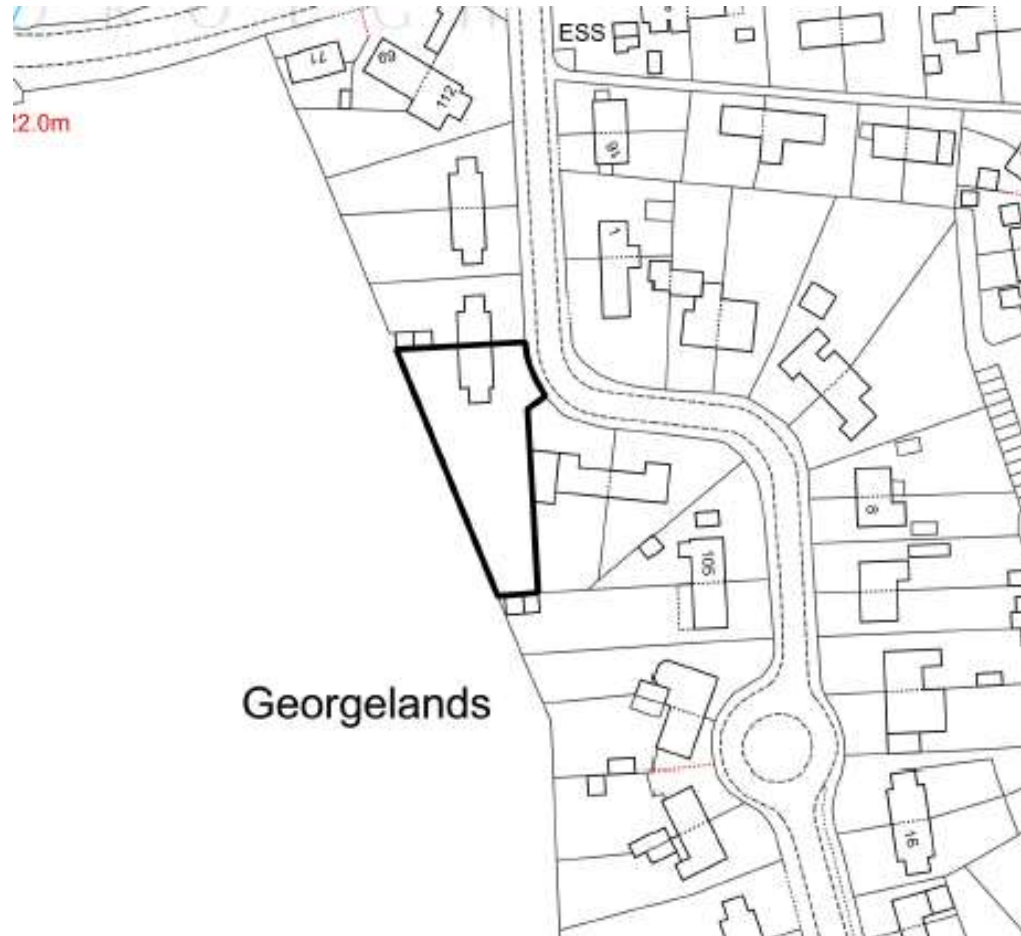
23/P/01668

**108 Georgelands
Ripley
Woking**

[Previous](#)

[Next](#)

[Home](#)





4 Elevation Front - North East
1:100



5 Elevation Side - South East
1:100



6 Elevation Rear - South West
1:100



7 Elevation Side - North West
1:100





Street scene

[Previous](#)

[Next](#)

[Home](#)



Photo looking into the site

[Previous](#)

[Next](#)

[Home](#)



Photo showing access

[Previous](#)

[Next](#)

[Home](#)



This page is intentionally left blank